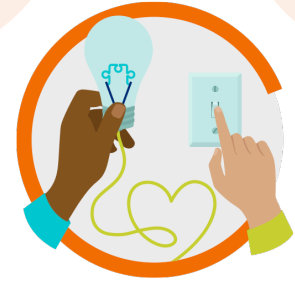


# Preschool Inclusion Universal Learning Tracks



Looking to expand your knowledge and capacity to support preschool inclusion? Join one of AnLar's Universal Learning Tracks: Practice, Policy, and Partnership! Led by AnLar's preschool special education experts, each track will help you build your knowledge base, implement effective strategies, and share information with colleagues through monthly activities. Each learning track will include webinars, resources, workshops, Communities of Practice, and more!



## Practice

Enhancing Inclusive Practices in Early Childhood Classrooms

The Practice Track is a learning series designed to empower educators with essential knowledge and skills needed to foster successful and inclusive opportunities.

Implementing a proactive and evidence-based **behavior management system**.

Develop and implement **high-quality and instructionally Appropriate IEPs (IAIEPs)**.

Implement **Evidence- Based Practices (EBPs)** in areas like peer mediated intervention and embedded learning opportunities.

## Policy

Increasing Preschool Access for All Children

### TRACK GOALS

The Policy Track is designed to support early childhood special education leaders to shift systems and create greater opportunities towards preschool inclusion.

### FOCUS AREAS

Explore the legal foundations of preschool inclusion (Section 619 of Part B IDEA, Individuals with Disabilities Education Act) to **support equal opportunities** for eligible children with disabilities.

Develop strategies for **acquiring additional funding** into inclusive opportunities.

Collect, use, and analyze **data to make programmatic decisions**.

Establish your **inclusion leadership team, vision, and culture**.

## Partnership

Committing to Build Partnerships in Preschool Inclusion

The Partnership Track offers leaders activities that will strengthen their leadership vision for strong partnerships in support of children with disabilities.

Strengthen **family partnerships** to actively engage them in the IEP process.

Support **cross-program collaboration** among different community partners.

Plan for the **implementation of high-quality learning experiences** for children with disabilities.

Want to get updates on TN-TAN resources from AnLar? Just scan this QR code with your smartphone!

